



# SAVING A DYING LAKE

SAVE MALAYSIAN'S  
PRIDE AND THE EARTH

## Rehabilitation of Tasik Chini and Sustainability Awareness Programme

Many of us neglect nature and take ecosystem services for granted, forgetting that we depend strongly on nature for our survival. An idiom, “**what goes around comes around**”, is so true to remind us how we treat our nature, will definitely have effects on our survival, perhaps, within our generation or generations to come. We have already seen the impacts and consequences of human activities in our daily life. **Don't we want to ensure the survival of our children?**

### Conservation of Freshwater Lake

While development is inevitable, the impact of the economy and job creation often overshadows the cost it has on the surrounding ecosystem. The history of human civilization told us the importance of fresh water for life, yet, it is a finite resource. Among all water on Earth, only 3% is fresh water. The worries are many freshwater bodies had vanished. **One out of three natural lakes in Malaysia, Tasik Mentiga**, has suffered the same fate and **has already dried up** due to the unsustainable and non-systematic developments in the area surrounding the lake.

#### PROJECT LOCATION



#### VIDEO INTRODUCTION

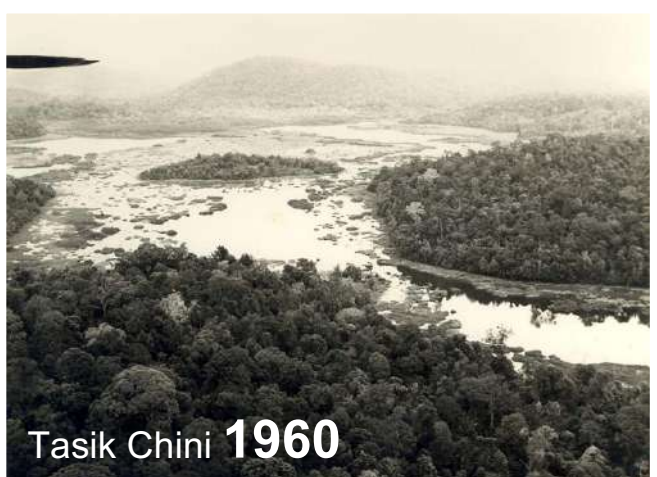
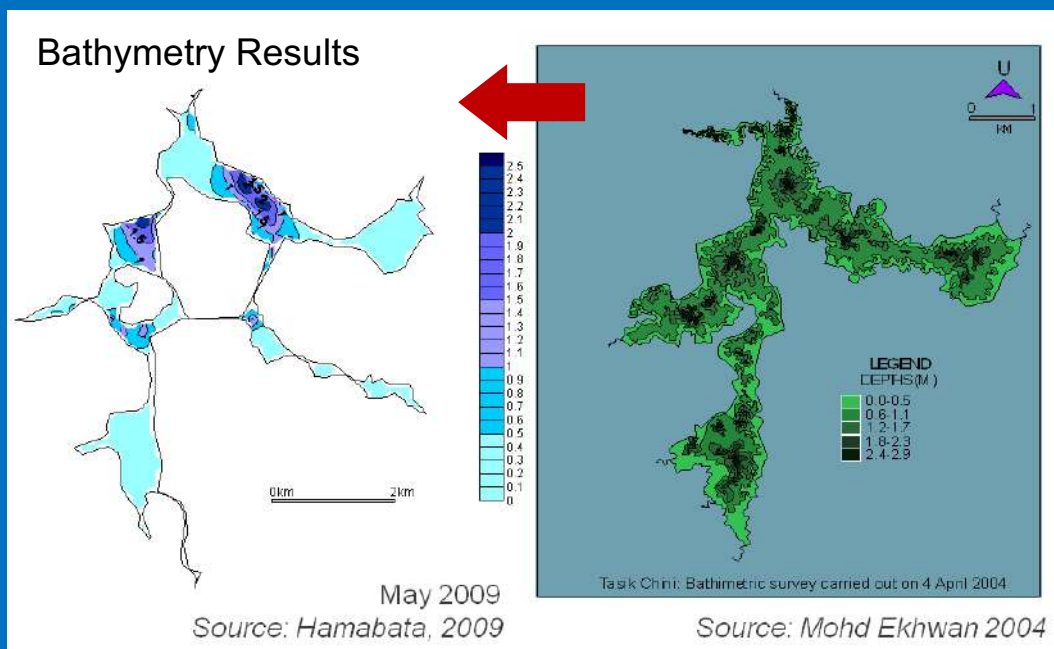
<https://youtu.be/r1b6eJC1eKs>



# Urgency at Tasik Chini

Tasik Chini, Malaysia's second largest freshwater lake adjacent to Tasik Mentiga, is the first to obtain **UNESCO Biosphere Reserve status** in Malaysia in November 2009. It once has beautiful scenery and a rich, self-sustaining ecosystem. However, the ecosystem of the lake deteriorates over the years due to **illegal human activities** and **unregulated commercial projects**. Tasik Chini once has beautiful scenery and a rich, self-sustaining ecosystem. It is now left with **polluted water** which may no longer safe and **high sediments** which reduced the water catchment capacity. A Bathymetry Research reveals that **Tasik Chini is shrinking in size** due to sedimentation from mining activities.

## BATHYMETRY RESEARCH AT TASIK CHINI



Presence of "Cloud Forest" at Bukit Ketaya (now mined)



Mirror image against clear water



Bigger lotus

PREVIOUSLY AT TASIK CHINI



Healthy big Nephenthes



Strong healthy emergent trees (now affected by diseases mostly due to low water table)



Strong healthy trees along Sungai Chini (now most of the trees has been falling due to erosion)

## THEN

### Stable and Productive Natural Ecosystem

Green algae dominated the lake. Healthy composition of the zooplankton community. Presence of diverse species of macrobenthos. Class I to Class IIA water quality.

### Rich in Flora and Fauna

14 species of mammals; 12 species of herpeto-fauna; 96 species of birds with some included in the IUCN list of threatened species; 80 species of fish; 138 species of aquatic flora; 300 species of non-aquatic flora.



## NOW

### Deteriorated Ecosystem

Chini Forest Reserve is shrinking due to logging and mining activities. The forest is fragmented, which reduced the natural habitat and affecting diversity. Class IIA to Class III (nearest to logging and mining site) water quality.

### Reduced in Flora and Fauna

6 species of mammals; 1 species of reptile; 4 species of primate; 41 species of birds.

# What are the Current Immediate Impacts?



## The Livelihood of Orang Asli and Malay Settlement

The most direct impact is at the livelihood of the orang asli and the Malay settlement who depend on the lake for their daily requirements and social-economic activities.

## Losing Biodiversity

We are on the brink of losing floras and faunas at Tasik Chini. Some are unique to the region. Losing these species affect global genetic pools.

## Losing UNESCO Biosphere Reserve Status

UNESCO Biosphere Reserve status is due to auditing in the year 2019. Losing the status reflects badly on our country.

## Tourism

Losing the beauty of Tasik Chini will affect the tourism industry and thus, the economic potential for the orang asli and the Malay settlement.

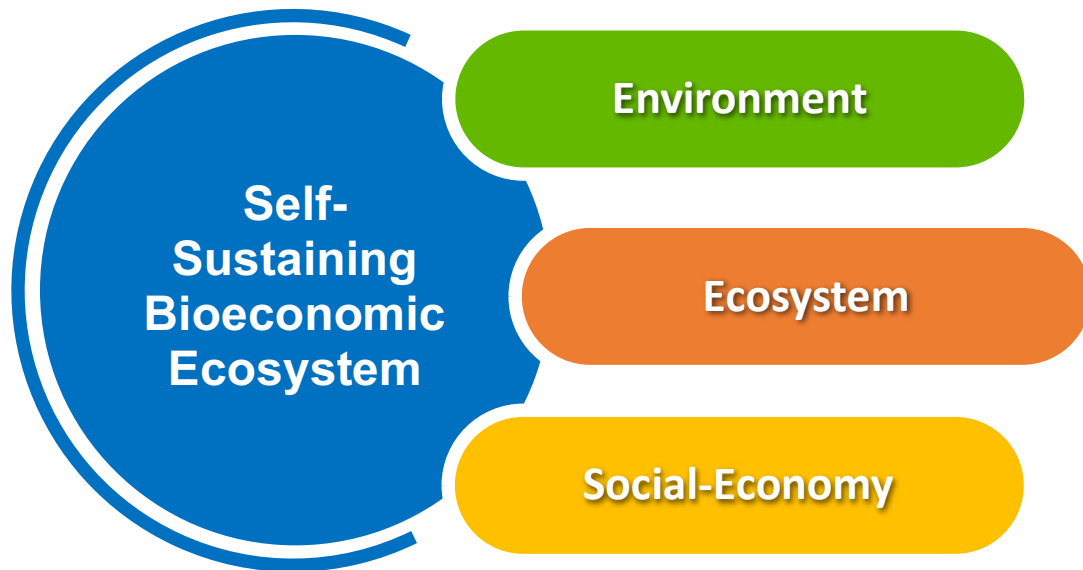
## Project Objective

Revive Tasik Chini Biosphere Reserve area and recreate it into a **self-sustaining bioeconomic ecosystem** with a positive contribution to **nature, livelihood, culture and social-economy**.

Conformity with United Nations Sustainable Development Goals (UN SDGs):



# Project Coverage



## Environmental Awareness

- Sustainability lifestyle **awareness programme**.
- Orang asli environmental awareness programme.
- **Sustainability practice consultation and training programme** for surrounding industries.
- **Coordination center** for sustainable industry.

## Ecosystem Rehabilitation

- Removing of sedimentation to **maintain the water catchment capacity**.
- Strategize **water cleaning operation**.
- **Erosion prevention** with replanting on lakeshore and surrounding forest.
- Maintaining **species diversity**.

## Social-Economy Development

- **Sustainable farming** and harvesting to improve livelihood of orang asli and local settlement.
- Enhancing local **sustainable ecotourism and edutourism** industry.
- **Eco-guide training programme** for orang asli.
- **Cultural and eco-products** development.

# The Benefits of Tasik Chini Rehabilitation



Improve the livelihood of Orang Asli and Malay Settlement



Maintaining culture of Orang Asli



Return Tasik Chini to its former ecological glory



Maintaining diverse global gene pools



Maintain UNESCO Biosphere Reserve status



Enhance Malaysia tourism industry



Create a sustainable community



Showcase the future of the sustainable bioeconomic industry

## The Benefits for Sponsor

Brand to be advertised on SE Elements's website

Name and logo to appear on the sponsorship board beside Aqua Garden (open to visitors)

Join cheque presentation ceremony at the Aqua Garden opening ceremony press conference

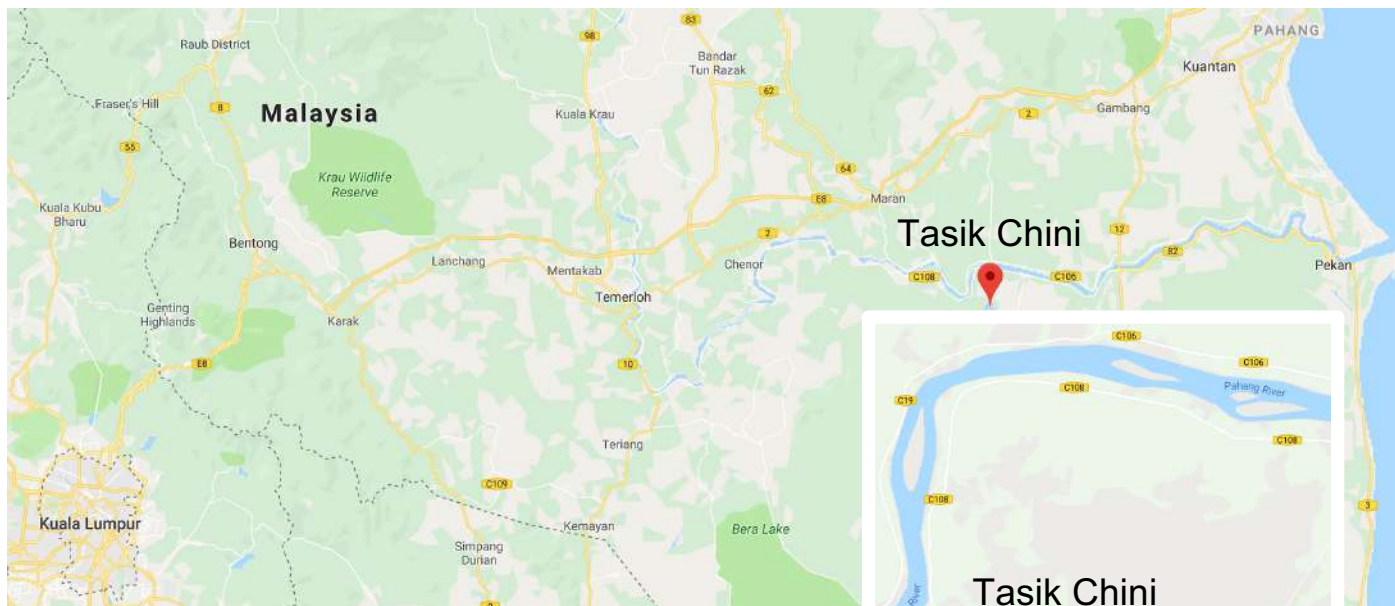
Lead and Main sponsors will join ribbon cutting ceremony for Aqua Garden

Appearance at lakeshore replanting press conference

Appearance in marketing materials related to Tasik Chini and Aqua Garden published by PPTC, UKM

Enjoy free or special discounted rate on the usage of PPTC facilities and training programmes

# Project Site






**Approximate traveling time to Tasik Chini from:**  
Kuala Lumpur = 3 hours  
Kuala Pilah = 3 hours  
Kuantan = 1 hour

# Project Organizers



# Contact Us

-  Raja Zainariah Binti Raja Hitam
-  [raja.zainariah@seelements.com.my](mailto:raja.zainariah@seelements.com.my)
-  +60 16 243 2815



[seelements.com.my](http://seelements.com.my)